

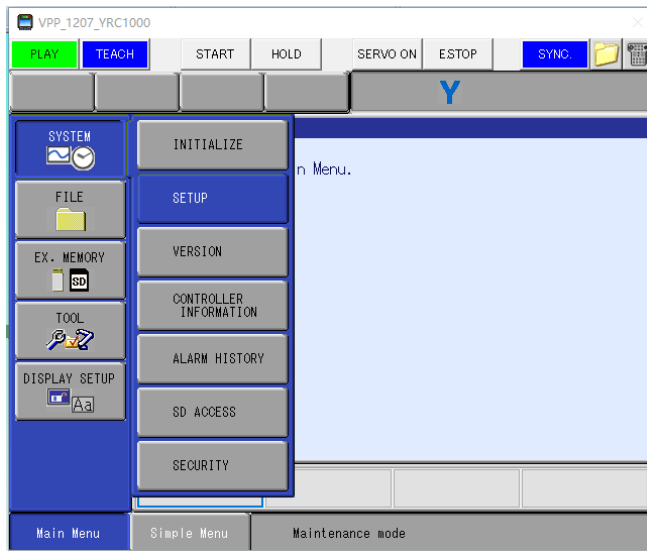
外部轴追加手順

编号名：手順-选项功能-002

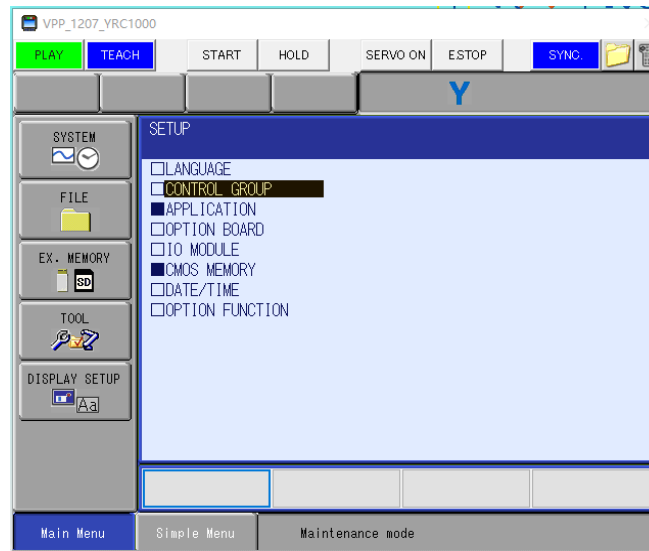
（安川中国R-上海技）

外部行走轴的追加①

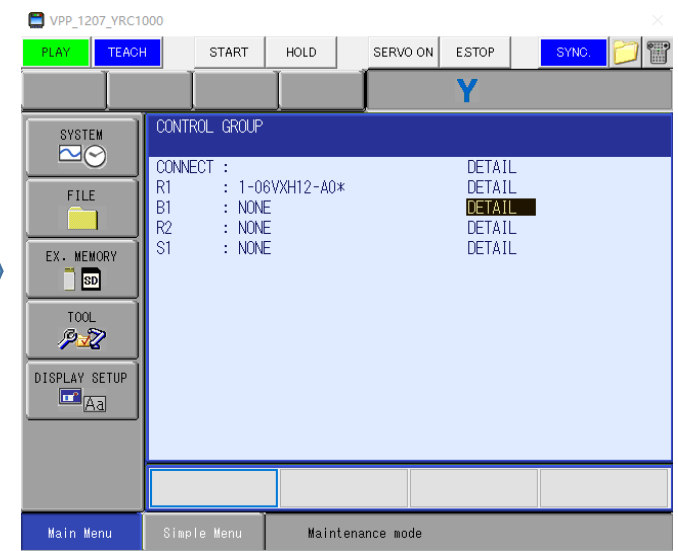
进入维护模式后选择系统→设定后按回车



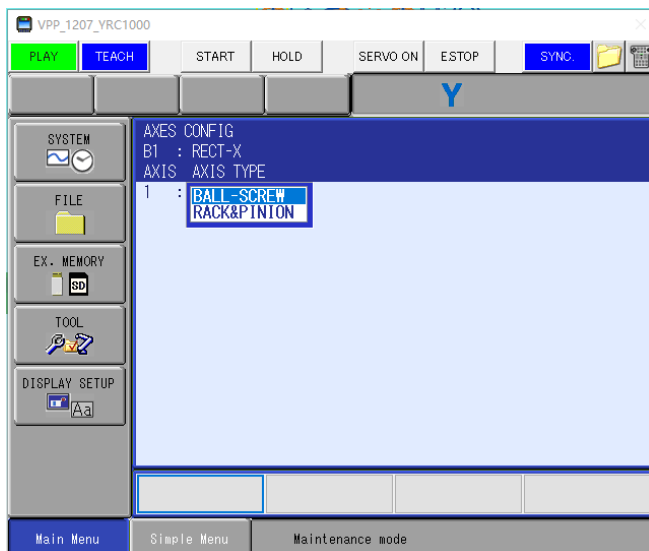
选择轴组设定后按回车



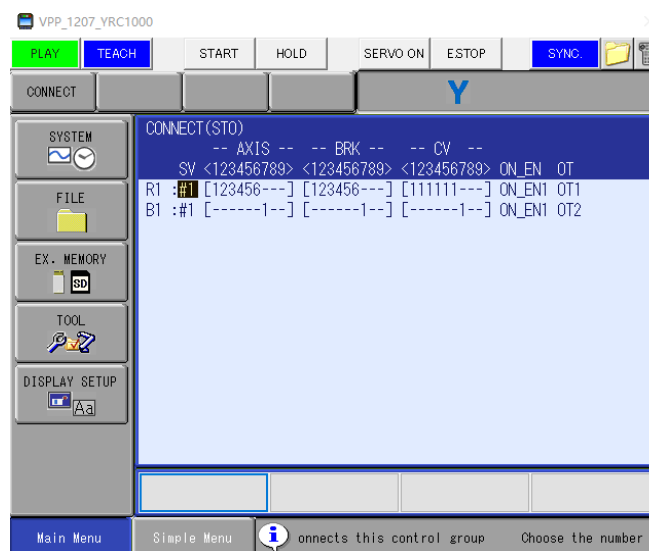
选择B1（行走轴No. 1）的详细设定后按回车



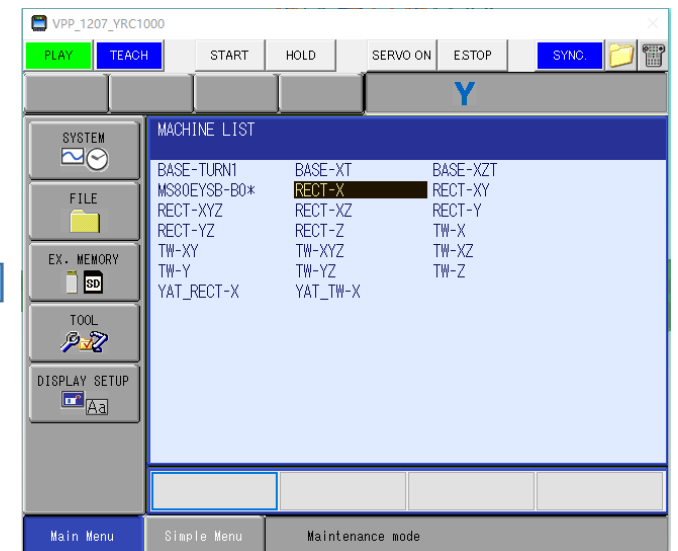
选择相应的轴组类型后按回车



确认B1这行是第7轴后按回车



选择需要的行走轴型号后按回车



外部行走轴的追加②

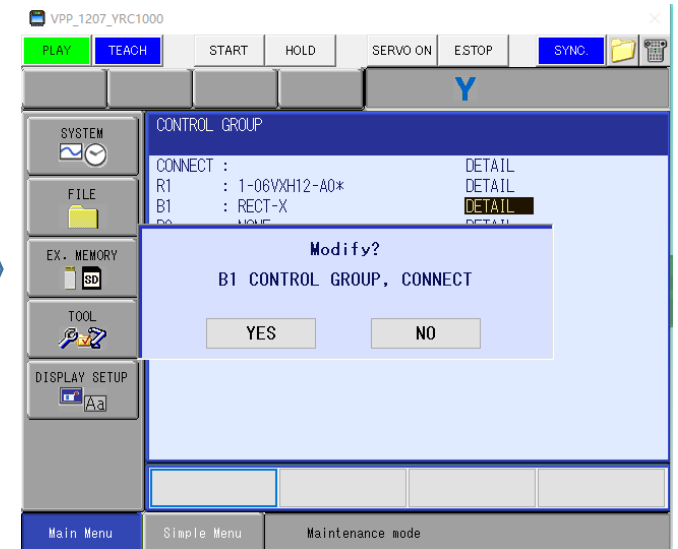
根据参数表设定范围、减速比等后按回车



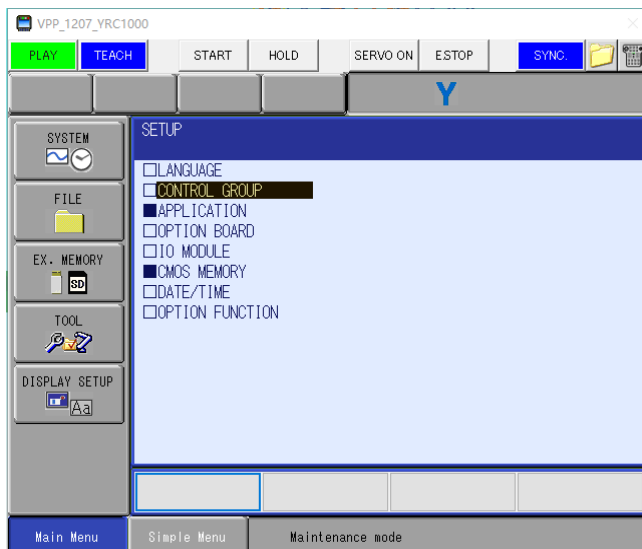
根据参数表设定型号、加速比、转速等后按回车



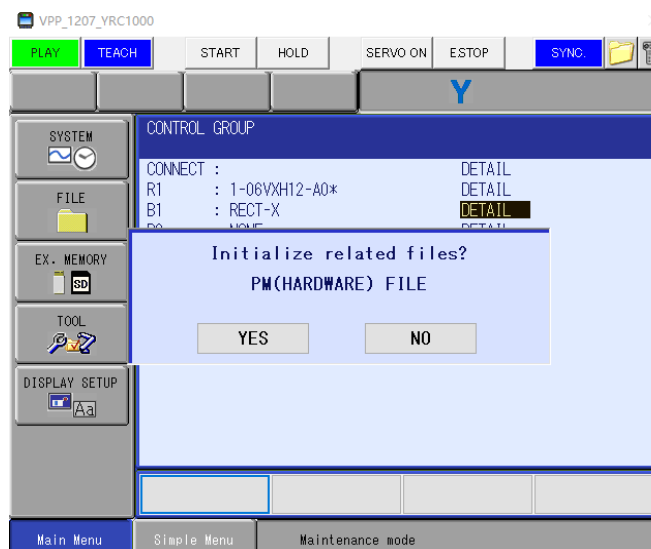
点击“是”确认轴组的设定后按回车



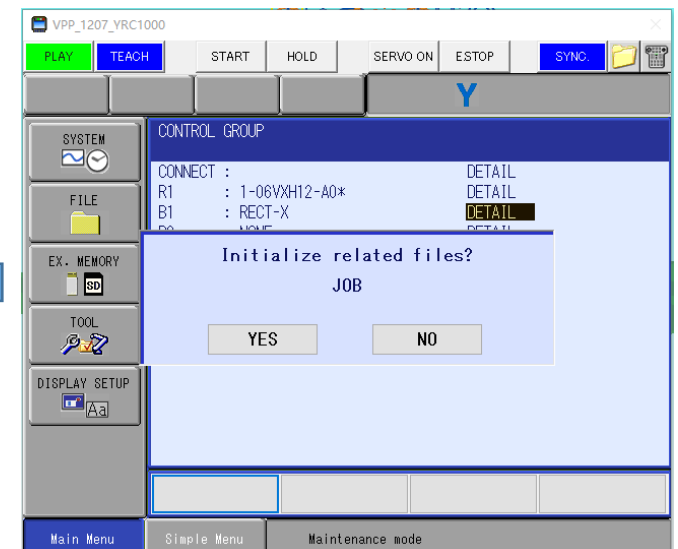
返回设置的主菜单即可完成追加操作



点击“是”确认初始化的设定②后按回车

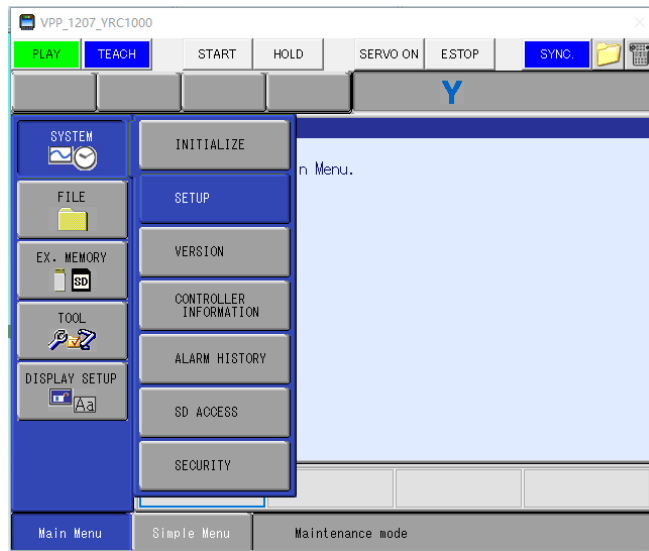


点击“是”确认初始化的设定①后按回车

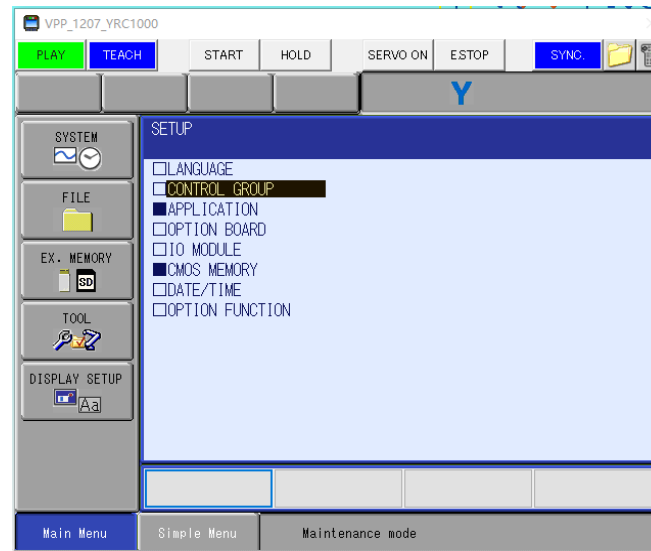


外部工装轴的追加①

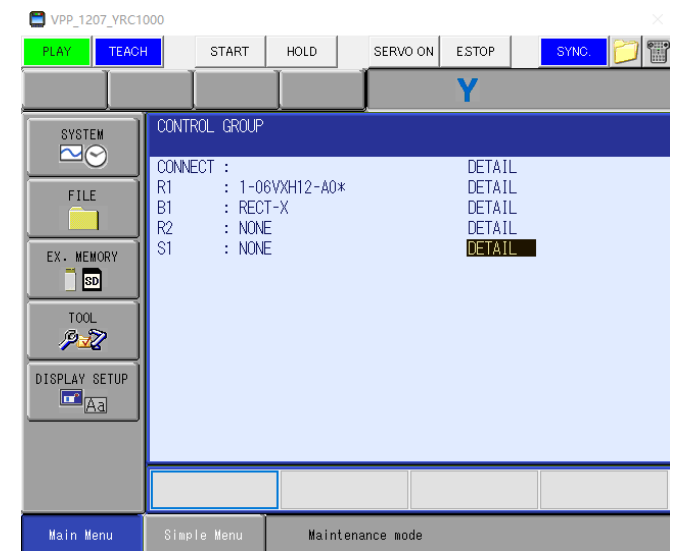
进入维护模式后选择系统→设定后按回车



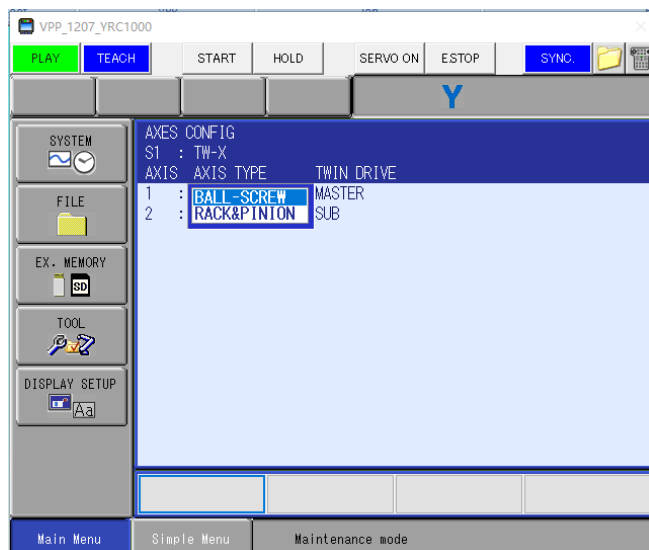
选择轴组设定后按回车



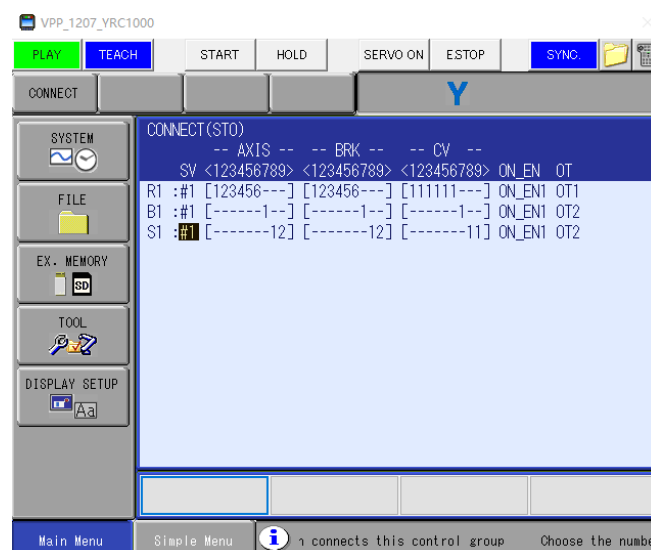
选择S1（工装轴No. 1）的详细设定后按回车



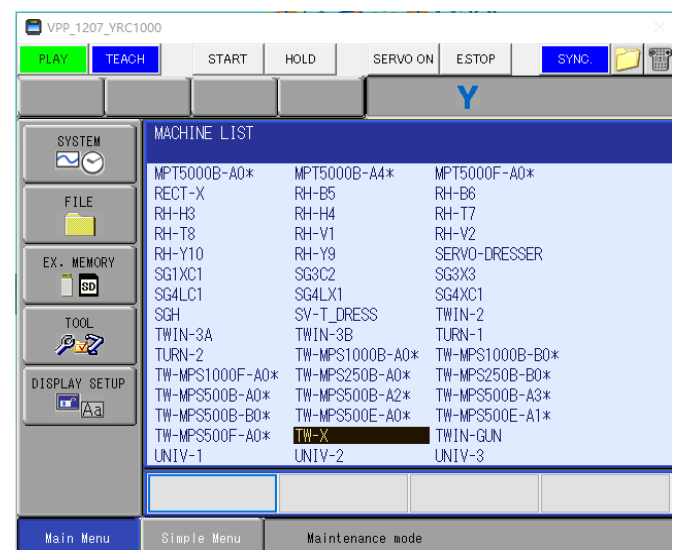
选择相应的轴组类型后按回车



确认S1这行是第8/9轴后按回车

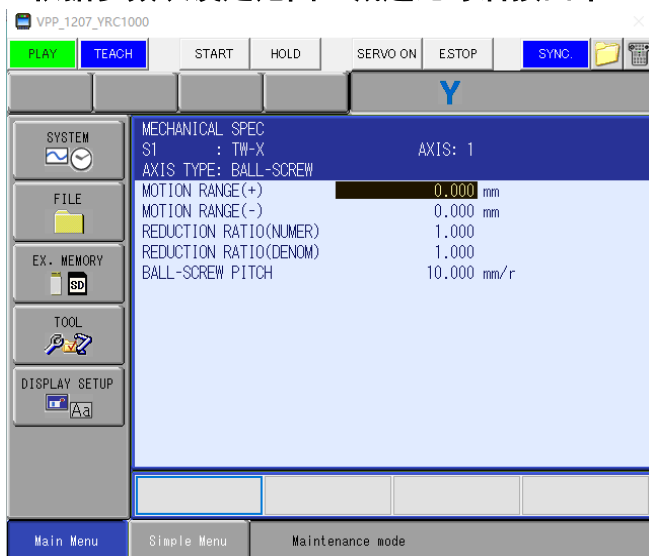


选择相应的工装轴型号后按回车

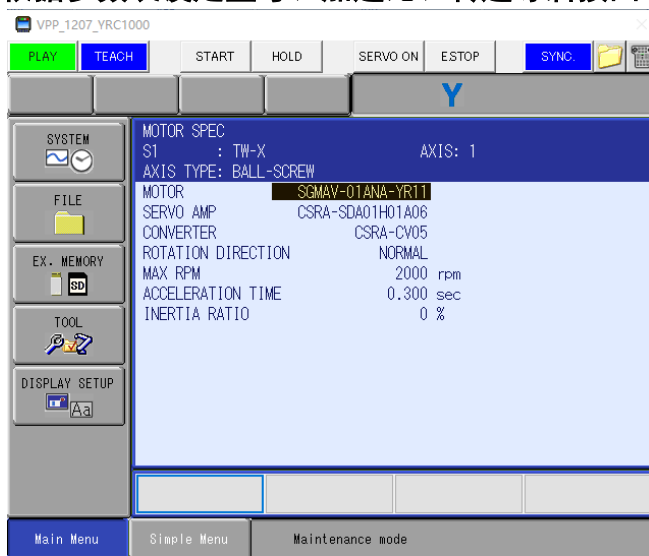


外部工装轴的追加②

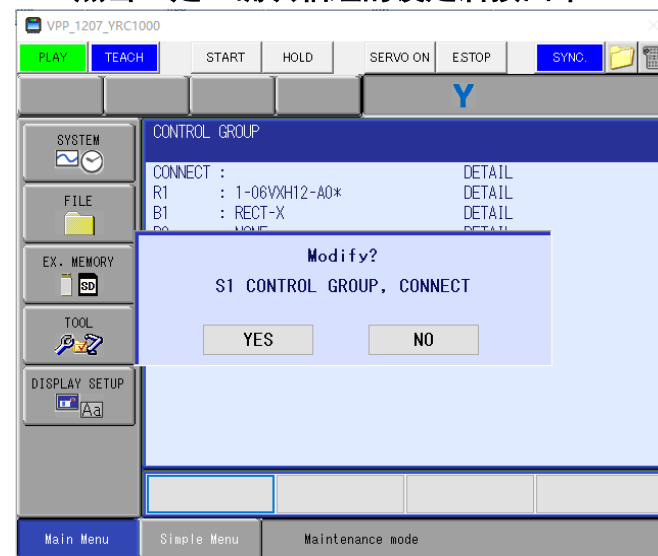
根据参数表设定范围、减速比等后按回车



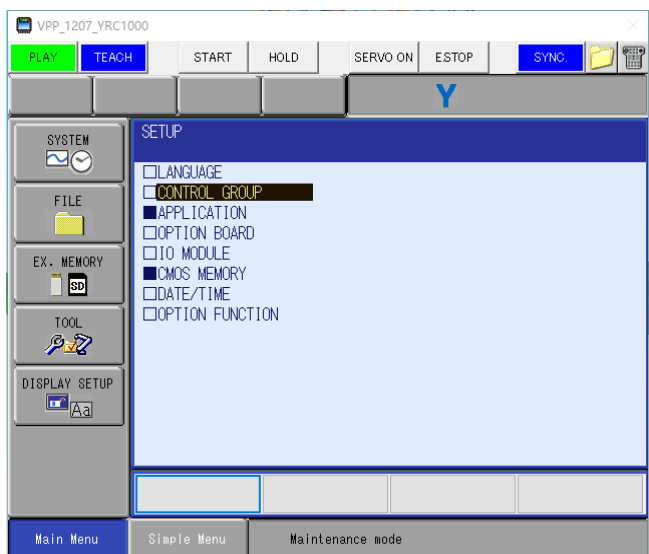
根据参数表设定型号、加速比、转速等后按回车



点击“是”确认轴组的设定后按回车



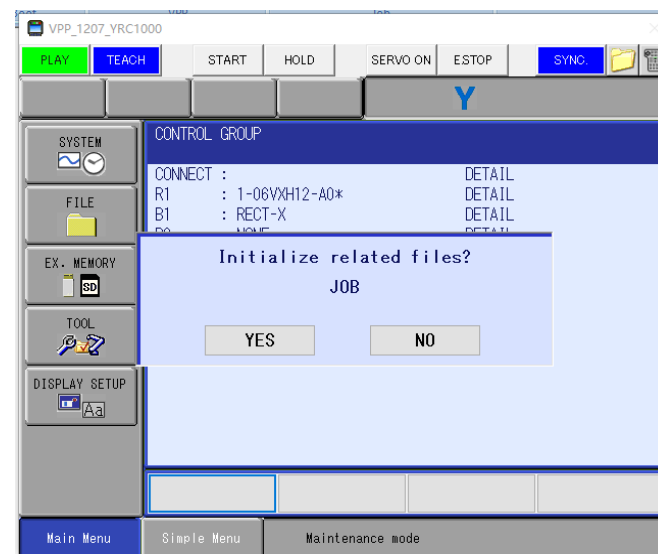
返回设置的主菜单即可完成追加操作



点击“是”确认初始化的设定②后按回车



点击“是”确认初始化的设定①后按回车



YASKAWA